

Bezel 701

NEC Integrated Touch Screen 70"



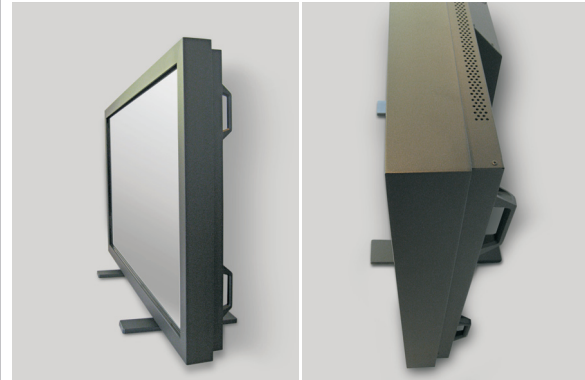
Bezel 701 - Custom Integrated Touch

IDT's Bezel 701 is a custom designed and integrated touch screen solution for the NEC Display P701. The integrated touch screen turns the high-performance Display into an efficient and very reliable interactive multi-touch solution.

The custom integrated touch Bezel is equipped with the unique NextWindow 2150 optical touch technology to ensure its longevity and reliable non-stop operations.

NextWindows optical touch technology is used by leading companies around the world and across a wide range of industries, including telecommunications, tourism, retail, real estate, public information and others.

With its unique integration design and high-end surface finish, the Bezel 701 represents great functionality and the good looks.



NEC Display Solutions

Highlights

- Custom Design for NEC Public Display P701
- Easy installation within 10 Steps
- Full IR Remote Control Functionality
- High-end Colour Finish
- Clear glass for maximum image clarity
- NextWindow 2150 Optical Touch Technology
- Accurate touch sensitivity over the entire screen
- Light touch: No pressure required
- Four-point driverless calibration. No drift.

[Detailed Specification - Page 2](#)

Product Name	Order Information	
	Model No.	Colour
Bezel 701	P701-INT	Black (matt standard)

Bezel 701

NEC Integrated Touch Screen 70"



Bezel 701 - Product Specification

Page 2

Technical Data: Bezel 701

*Technical Data applies to Custom Touch Bezel 701 only, not to the NEC Public Display [please review NEC datasheet]

Bezel Material:	Aluminium
Dimension:	1800 x 1000 x 90 mm
Surface Finish:	Black - Powder Coat (Standard)
Construction:	Fully welded aluminium frame
Mounting:	Direct fixation at NEC P701 panel via TBR rivets/socket-screws
Touch Technology:	NextWindow 2150 Optical Imaging
Glass:	5mm tempered glass
Touch Method:	Finger, Gloved hand, or any other Pointer
Touch Activation Force:	No pressure required
Touch Accuracy:	± 2 mm (for 40" screen) over 90% of the screen USB reported touch resolution 32767 x 32767
Touch Calibration:	Simple four-point Driverless calibration
Touch Durability:	Unlimited
Touch Response Time:	9 ms to 22ms depending on configuration, typical response time 14ms
Luminous Transmission:	>92% with glass, 100% without glass
Connectivity:	USB A-A
Interface:	USB 1.1 (full speed), HID compliant, plug-and-play compatible
Power:	+3.3V [via USB A]; USB from powered hub enumerates 350 mA
ESD:	Per EN 6100-4-2 1995: Level 4. Contact discharge 8 kV Air discharge 15 kV on USB
EMC:	EN55022, EN55024, CISPR22, CISPR24
Environmental Conditions	
Operating Temperature / Humidity:	0°C to 50°C; 10% to 90% RH, non-condensating
Storage Temperature / Humidity:	-25°C to 85°C; 10% to 90% RH, non-condensating
Operating Systems:	Windows 2000, XP, Vista, Windows7 Mac OS X, Linux (Optional)

Authorized Reseller:

Image Design Technology

Unit 2, 33-35 Alleyne Street
Chatswood NSW 2067

Phone 1300 666 099

www.idt.com.au