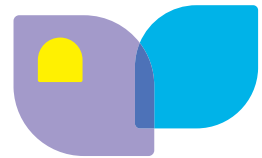


2700 Touch Overlay

for LCD/Plasma



nextwindow™
optical touch

APPLICATIONS | INFORMATION KIOSKS | DIGITAL SIGNAGE | INTERACTIVE WHITEBOARDS
| COMMAND CENTRES | BOARDROOMS | TRAINING AND EDUCATION

NextWindow's 2700 Touch Overlay turns any large LCD or plasma into an interactive display. Simply touch the screen for a more engaging way to connect with information.

Actions such as tap, pinch and swipe, allow you to select, resize and pan. These intuitive gestures allow you to advance through photo albums, play media and rotate images.

The overlay uses sophisticated optical imaging technology and a robust design to provide touch solutions suitable for high-traffic, public environments. This model connects through a HID-compliant USB interface and is plug-and-play. Since it is installed over a monitor, there is no need to open the display's enclosure voiding warranties.

The 2700 supports Microsoft's newest operating system, Windows 7, which utilizes multi-touch gestures. Zoom in or out of an image by moving two fingers closer together or further apart. Spin an object by rotating a finger around another, and right-click by holding one finger on your target and tapping the screen with another.



Unique Benefits

- > Multi-touch ready
- > Flexible—full mouse functionality with the touch of your finger or any object
- > Drift Free—needs only one-time, four-point calibration
- > Standard plug-and-play USB connection provides power and communication

Highlights

- > No surface coatings, unsurpassed optics
- > Fast and responsive
- > Standard sizes to fit most monitors from 32" to 82"
- > Supports Linux, Mac OS, XP, Vista and Windows 7

Easily installs onto standard plasmas or LCD monitors



Specifications

| | |
|-------------------------------|---|
| Available sizes | Sizes to fit standard monitors from 32" to 82" (See nextwindow.com for list of standard monitors supported) |
| Glass | 5 mm tempered glass |
| Bezel colour | Black powder coated |
| Construction | Aluminium, die-cast zinc, acrylic, PVC, FR4 fibreglass printed circuit boards and tempered glass |
| Luminous transmission | Better than 88% with clear glass |
| Touch technology | NextWindow Optical Imaging (no special surface coatings) |
| Touch method | Finger, gloved hand or any other pointer. Stylus minimum 3 mm tip |
| Touch activation force | No pressure required |
| Touch accuracy | ± 2 mm (for 40" screen) over 90% of the touch-sensitive area, USB reported touch resolution 32767 x 32767 |
| Touch durability | Unlimited |
| Touch response time | 9 ms to 22 ms depending on configuration, typical response time 14 ms |
| Environment | Operating temperature: 0°C to 55°C, Storage temperature: -25°C to 85°C Humidity: operating: 10% to 90% RH, non-condensating, storage: 10% to 90% RH, non-condensating |
| Power supply | USB from powered hub, maximum demand from USB port: 350 mA |
| Calibration | Four-point driverless calibration (requires no software) |
| ESD | Per EN 61000-4-2 1995: Level 4, contact discharge 8 kV, air discharge 15 kV on USB connector pins |
| EMC | EN55022, EN55024, CISPR 22, CISPR 24 |
| Interface | USB 1.1 (full speed), HID compliant, plug-and-play compatible |
| Operating systems | Windows XP, 2000, Vista, Windows 7 (requires driver), Mac OSX, and Linux (requires evtouch) |
| Connection options | Standard: USB Series B receptacle Serial option: DB9 serial receptacle on a flying lead with mains adaptor to supply 5 Vdc power via the USB cable |
| Software | No software required, works with Windows native HID mouse driver NextWindow Touch+ software provides additional utilities Driver available for gesture support on Windows 7 |
| Warranty | 1 year parts and labour |

Specifications subject to change without notice

New Zealand

13-15 College Hill, Ponsonby
Auckland 1011, New Zealand

Postal Address

PO Box 91383, Victoria Street West
Auckland 1142, New Zealand

t +64 9 353 6608

f +64 9 353 6609

nextwindow.com

United States

7020 Koll Center Parkway, Suite 138
Pleasanton, CA 94566 USA

t +1 925 271 2390

f +1 925 461 5019

Taiwan

17F/B, No 167

DunHua N. Road

Taipei 105, Taiwan

t +886 2 2717 1999, Ext 1401

sales@nextwindow.com



nextwindow™