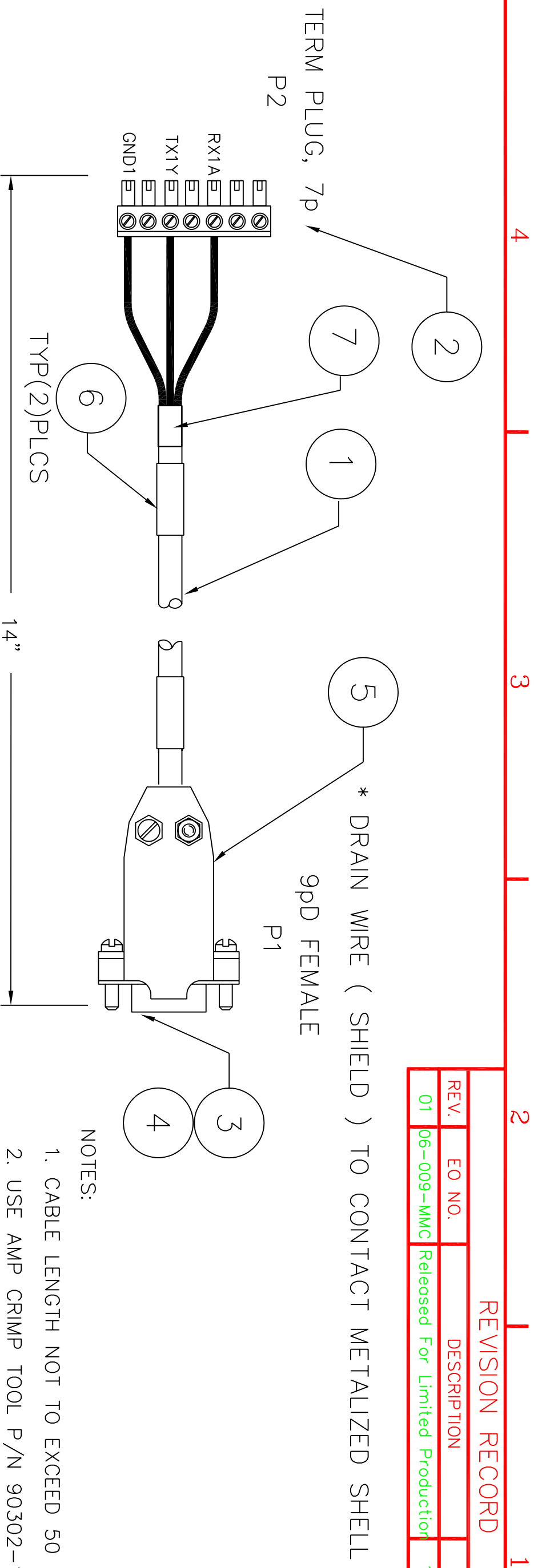


REVISION RECORD				
REV.	EO NO.	DESCRIPTION	DATE	APPVD.
01	06-009-IMC	Released For Limited Production	1/9/06	REF



NOTES:

1. CABLE LENGTH NOT TO EXCEED 50 FEET.
2. USE AMP CRIMP TOOL P/N 90302-1 FOR ITEM 4.
3. STRIP 1/4" INSULATION FROM EACH WIRE AT P2 AND TIN EACH END PRIOR TO INSERTING INTO CONN.
4. CUT BACK UNUSED CONDUCTOR IN CABLE AND USE SHRINK TUBING TO COVER CUT BACK END OF CABLE
5. CABLE LABEL TO REFLECT MR PART NUMBER.
6. CONTINUITY TEST REQUIRED AFTER ASSY. QC STAMP ALSO REQUIRED

SEE SEPARATE B.O.M.

PINNING CHART				
SIGNAL	COLOR	P1	P2	
RS232 RXD	COND1	2	TX1Y	
RS232 TXD	COND2	3	RX1A	
GND	COND3	5	GND1	
SHIELD	DRAIN	*	-	

REMOVE ALL BURRS AND BREAK ALL SHARP EDGES		DRAWN JP/CEM		DATE 11-05	
UNLESS OTHERWISE SPECIFIED ALL DIMENSIONS ARE IN INCHES TOLERANCES ARE AS FOLLOWS		CHECKED			
FRACTIONS DECIMALS ANGLES		ENGR			
± 1/64 .XX ±.01 ± 1/2°		APPVD REF		1/9/06	
.XXX ±.005		FILE			
MATERIAL		FINISH		TITLE	
PROPRIETARY TO MAGENTA RESEARCH LTD. NOT TO BE USED OR REPRODUCED FOR MANUFACTURING PURPOSES EXCEPT ON MAGENTA RESEARCH ORDER OR PRIOR TO WRITTEN CONSENT.				CABLE ASSY, Mondo	
				RS232 SERIAL CONTROL	
		SIZE B		DRAWING NO. 8450342-01	
		SCALE NONE		DO NOT SCALE DRAWING	
				SHEET 1 OF 1	
				REV 01	