



Fusion Catalyst

QUICK START GUIDE FOR FUSION CATALYST 4000



1 What's in the Box

You should have the following:

- 1 ControlPoint CDROM
- 1 Restore Disk DVDROM
- 1 Microsoft Windows package
- 1 USB Keyboard and USB Mouse
- 1 Power Cable (either US or Europe) 1 per chassis
- 1 Fusion Catalyst 4000 Chassis
- DVH to VGA adapter (1 per output channel)

Options

- Expansion Chassis and Cable(s)
- Octal Video Input Panel(s) and Cables

GETTING STARTED GUIDE • PAGE 10

2 Finding Your Manuals

You will find your manuals both on the ControlPoint CDROM and installed on your system under the Start Menu.

- Open the Start menu.
- Follow the path shown below:
Start\Programs\Jupiter\Manuals\

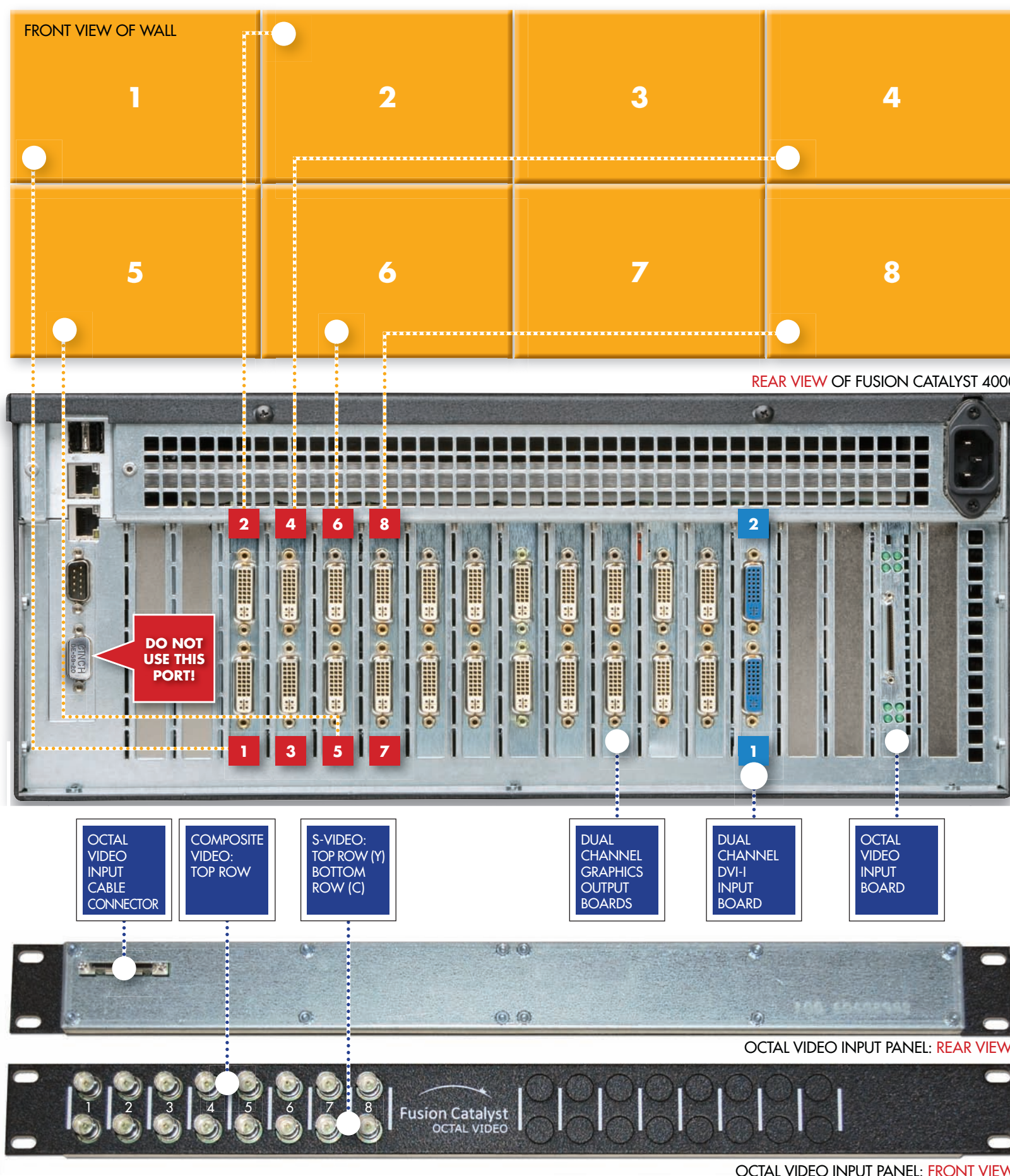
CONTROLPOINT SOFTWARE MANUAL • PAGE 15

3 Installing the System

Rack the system to provide ample airflow to the system without interference in front (intake), or rear (exhaust).

The Catalyst 4000 system does not come with rack mount rails as standard equipment. However, rails can be ordered from Jupiter, or from your rack supplier.

HARDWARE MANUAL • SECTION 5.3

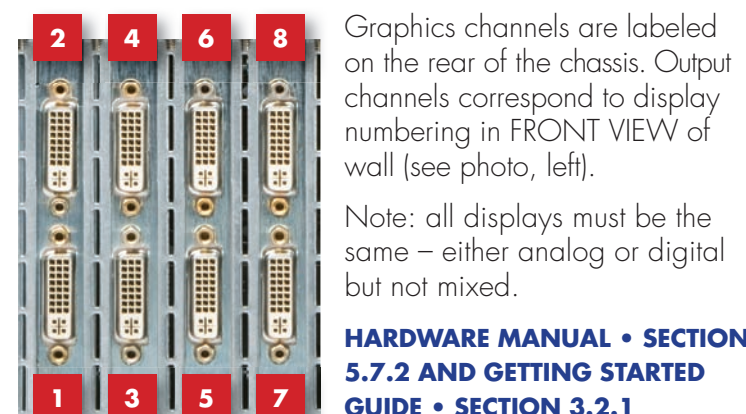


4 Connecting to the Displays

The Catalyst 4000 system outputs can be connected with either DVI-D cables or analog (VGA) cables. If analog cables are used, you will need to install adapters shown here. Catalyst 4000 output connectors are white.



HARDWARE MANUAL • SECTION 4.3



5 Connect DVI Inputs

The blue Catalyst 4000 system DVI input channels are numbered on the rear panel. These channels correspond to the channel number selected in the software. DVI input connectors are blue (see photo, right). You can connect analog VGA or HD component using optional adapter cables.



6 Connect Video Inputs

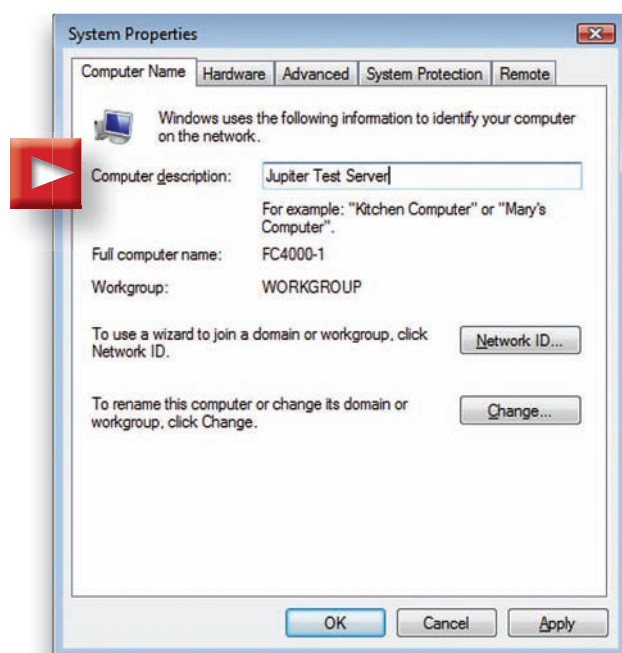
The Octal Video Input Panel connects to the rear panel connector on the Octal Video board with the corresponding VHDCI Octal Video Cable.

The dual Octal Video Input Panel will support two Octal Video boards.

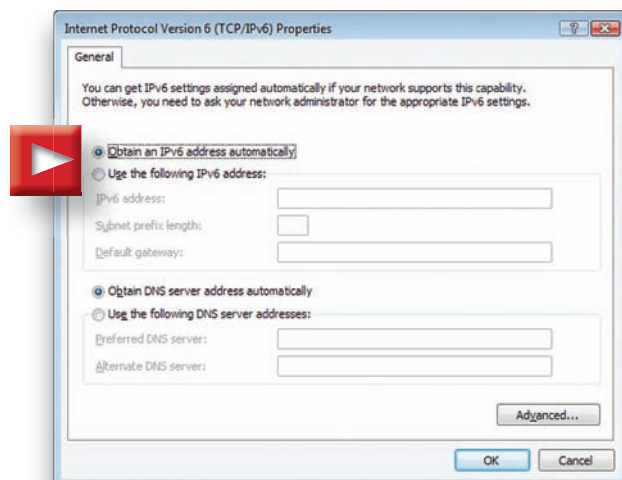
SETTING UP THE SOFTWARE

7 Getting Started

- Change the computer name as needed.

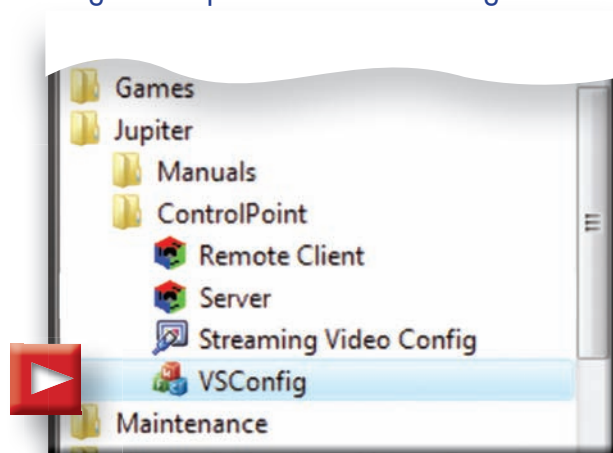


- Change the computer IP address as needed.



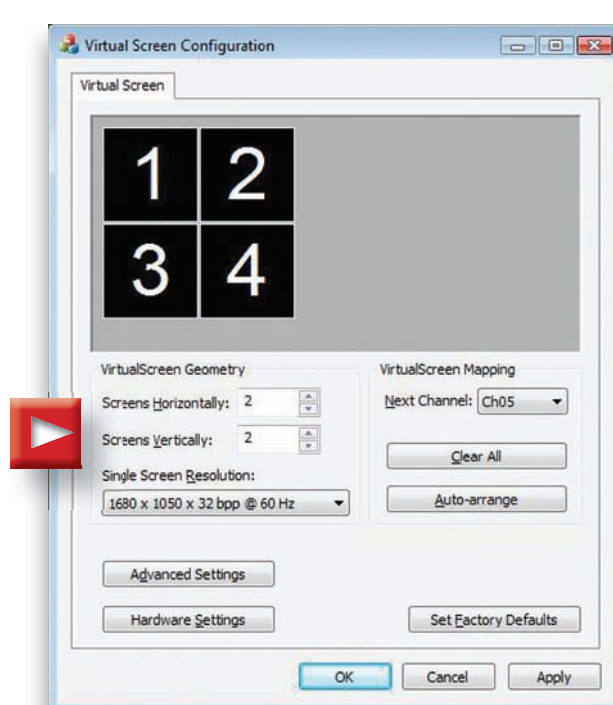
8 Run VSConfig

Click the Task Bar Start button, then Programs\Jupiter\Utilities\VSConfig



9 Setup Display Wall

- Set the number of Screens Horizontally.
- Set the number of Screens Vertically.
- Set single screen resolution.
- Click OK.
- Restart Windows, click Yes to confirm.

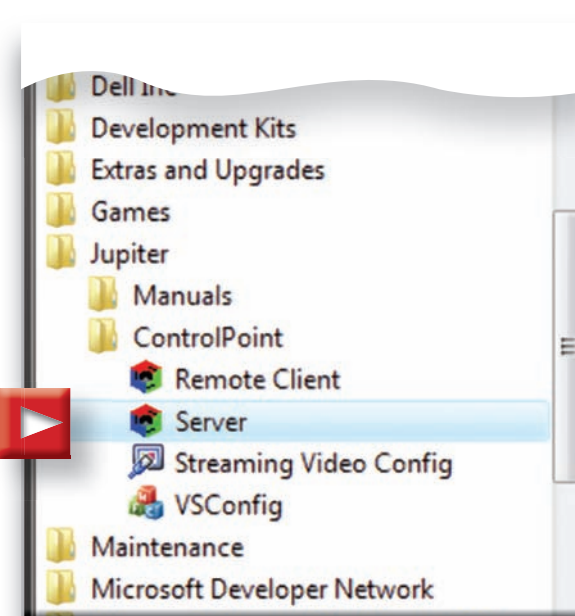


10 Reboot

- Reboot the System a Second Time
- The first reboot was for Windows, the second reboot is for VirtualScreen. Note: Anytime VSConfig settings are changed you must reboot two times

11 Start the ControlPoint Server

- The ControlPoint Server must be started manually.
- Do NOT put a ControlPoint Server shortcut icon in the Startup folder.
- Click the Task Bar Start button, then Programs\Jupiter\ControlPoint\Server



12 Setup Network

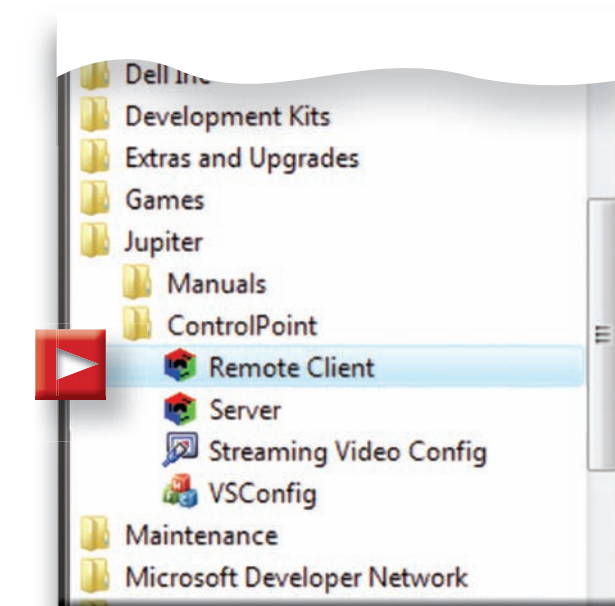
Set up network according to your IT department policies. Insure that the client workstations are network accessible to the server and vice versa.

13 Install the ControlPoint Client

- Insert the ControlPoint CDROM in the DVD Drive on the remote workstations. The CD will AutoStart. Ignore any errors.
- Open the D: (DVD) drive.
- Open D:\Setup\RemoteClient and double click RemoteClientSetup.exe, then follow the instructions of the install wizard.

14 Start the ControlPoint Client

Click the Task Bar Start button, then Programs\Jupiter\ControlPoint\Remote Client



Congratulations!

Your Fusion Catalyst 4000 Wall Controller is now ready to use.

FOR DETAILS REFER TO YOUR MANUAL. FOR HELP CONTACT JUPITER SUPPORT.